

# QEE XO AUTOML INSTALLATION GUIDE FOR WINDOWS\* (AWS VERSION)

Jan 10, 2022 -- v.4.0.0

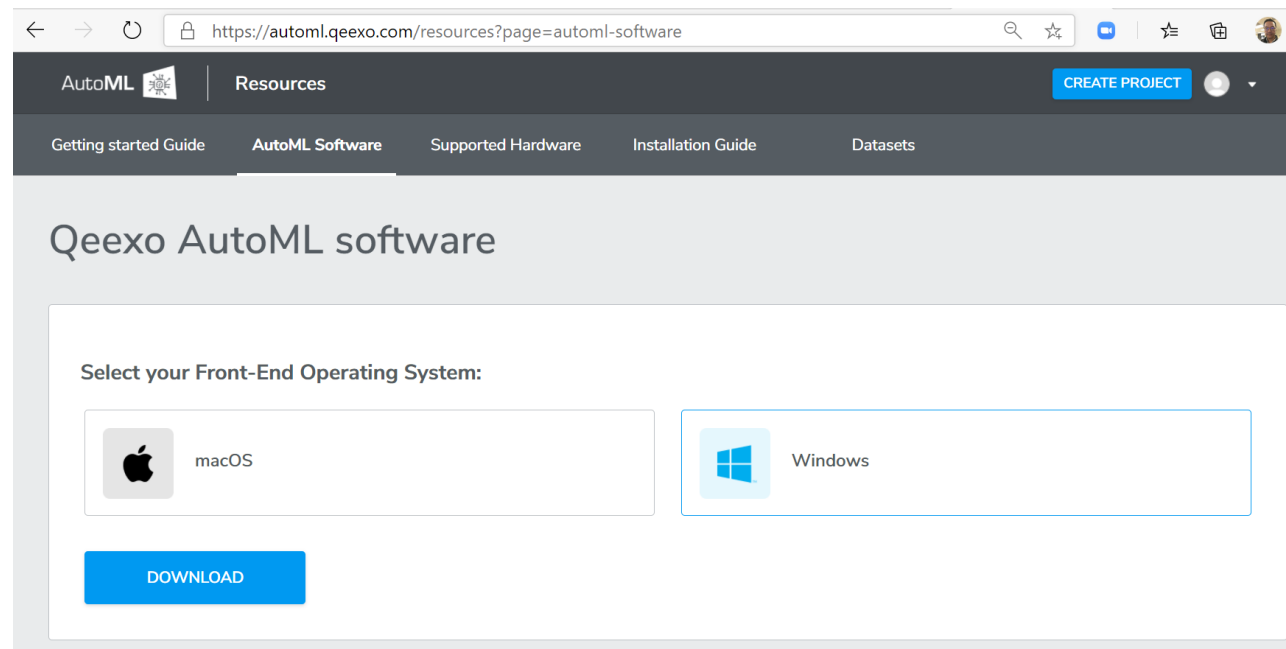
This document details the installation and upgrade process for the AWS version of Qeexo AutoML, where its backend runs on a private instance of the AWS cloud.

\*Tested on Windows 10 Build 2004 Version 19041.630

## STEP 1: Install Qeexo AutoML

### A. Download Qeexo AutoML

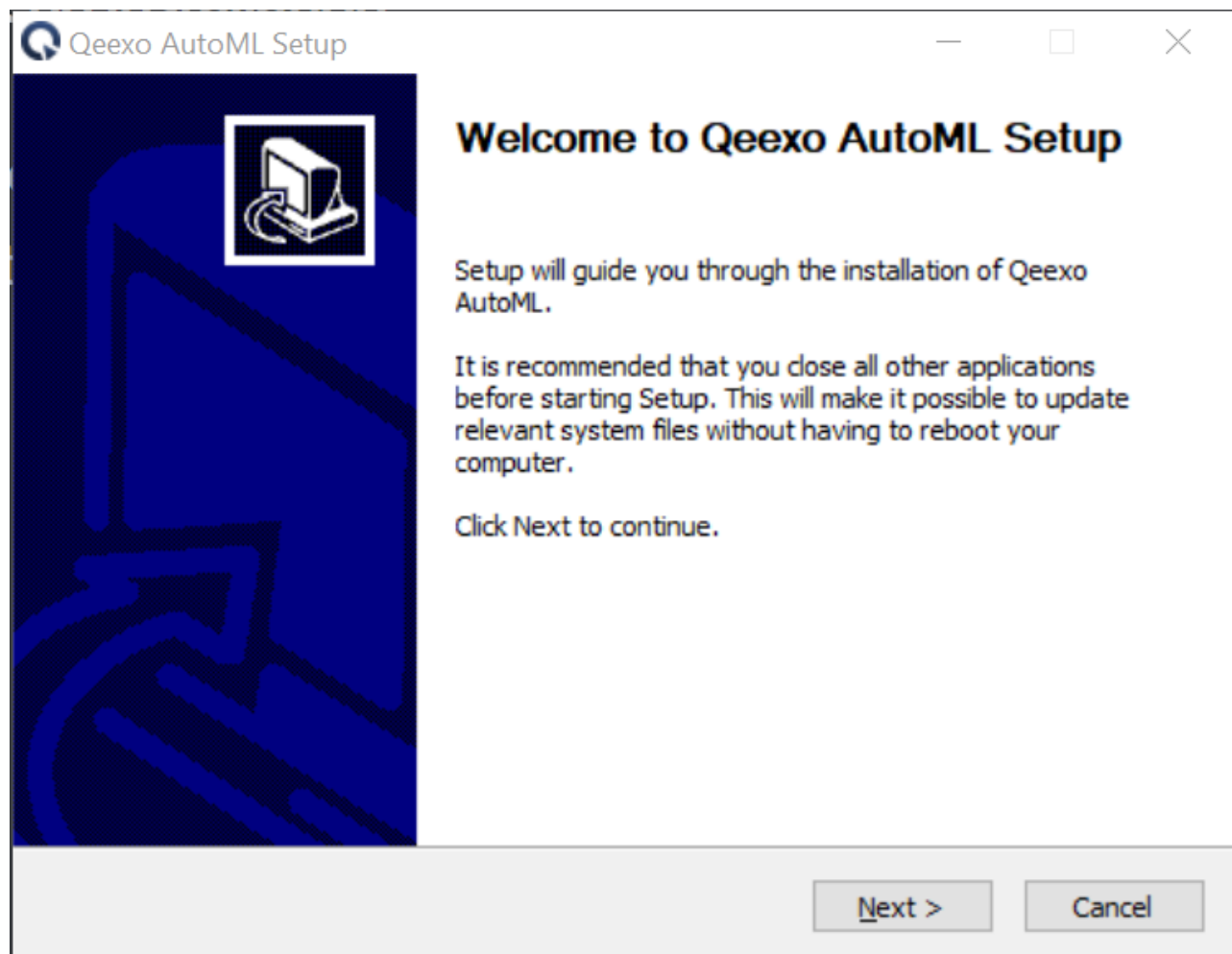
After registering and logging in on <https://www.qeexo.com>, please visit this [link](#) to download the Windows installer.



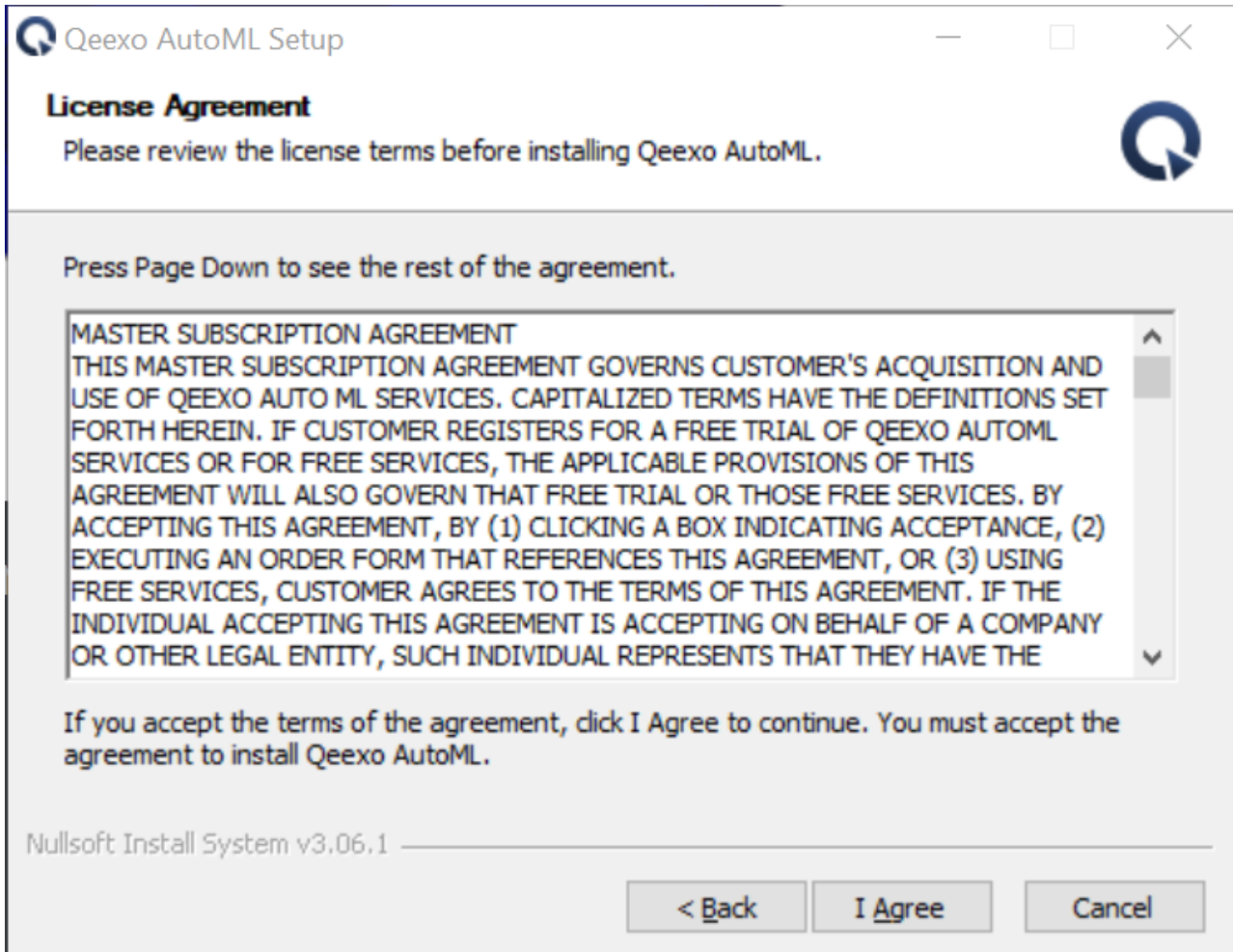
### B. Frontend Installation

Once the installer is downloaded, double-clicking **QeexoAutoML-installer-Windows.exe** to install the frontend.

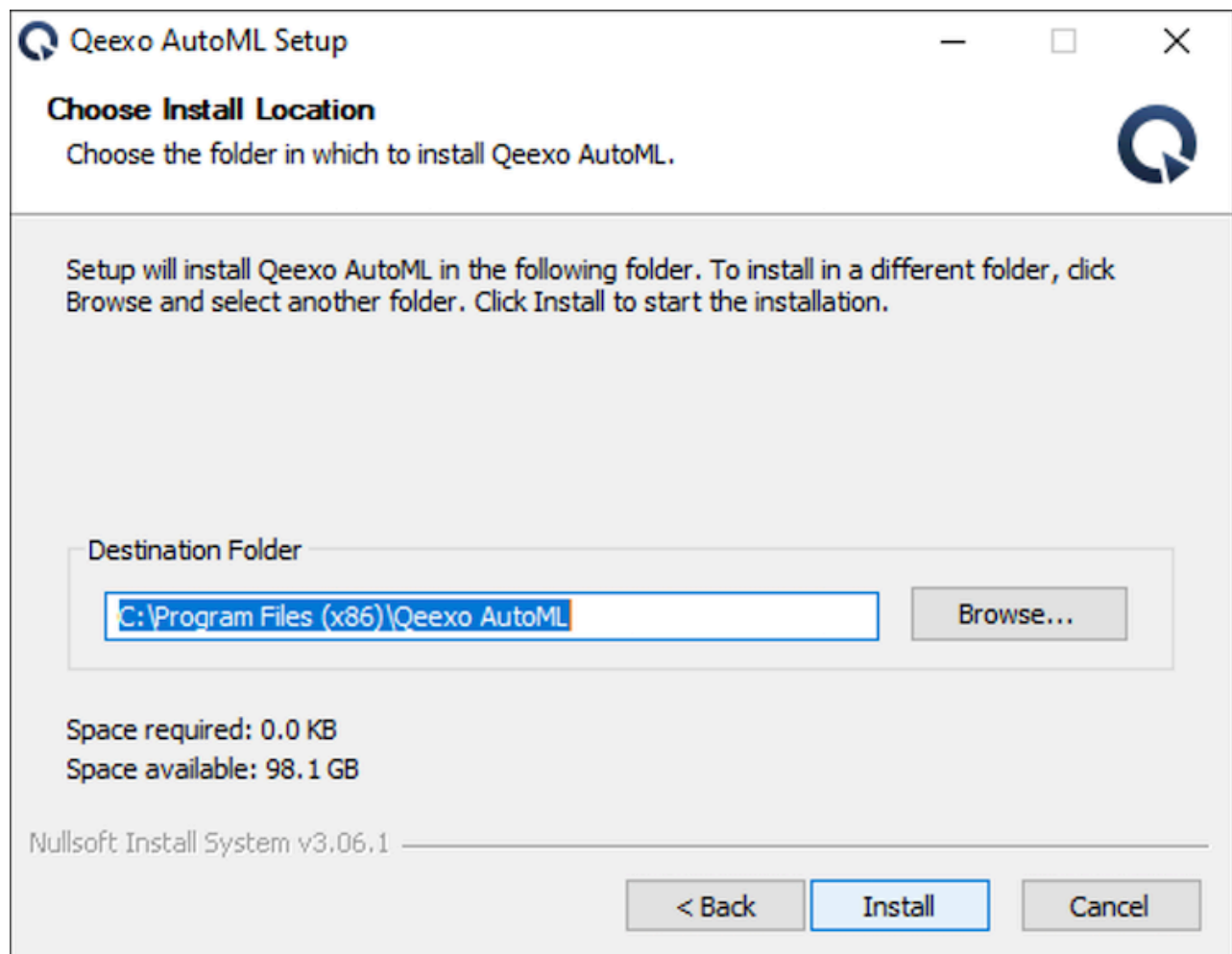
Then the welcome screen will be presented which begins the installation process:



After clicking "Next" button, read and accept the agreement to continue installing.

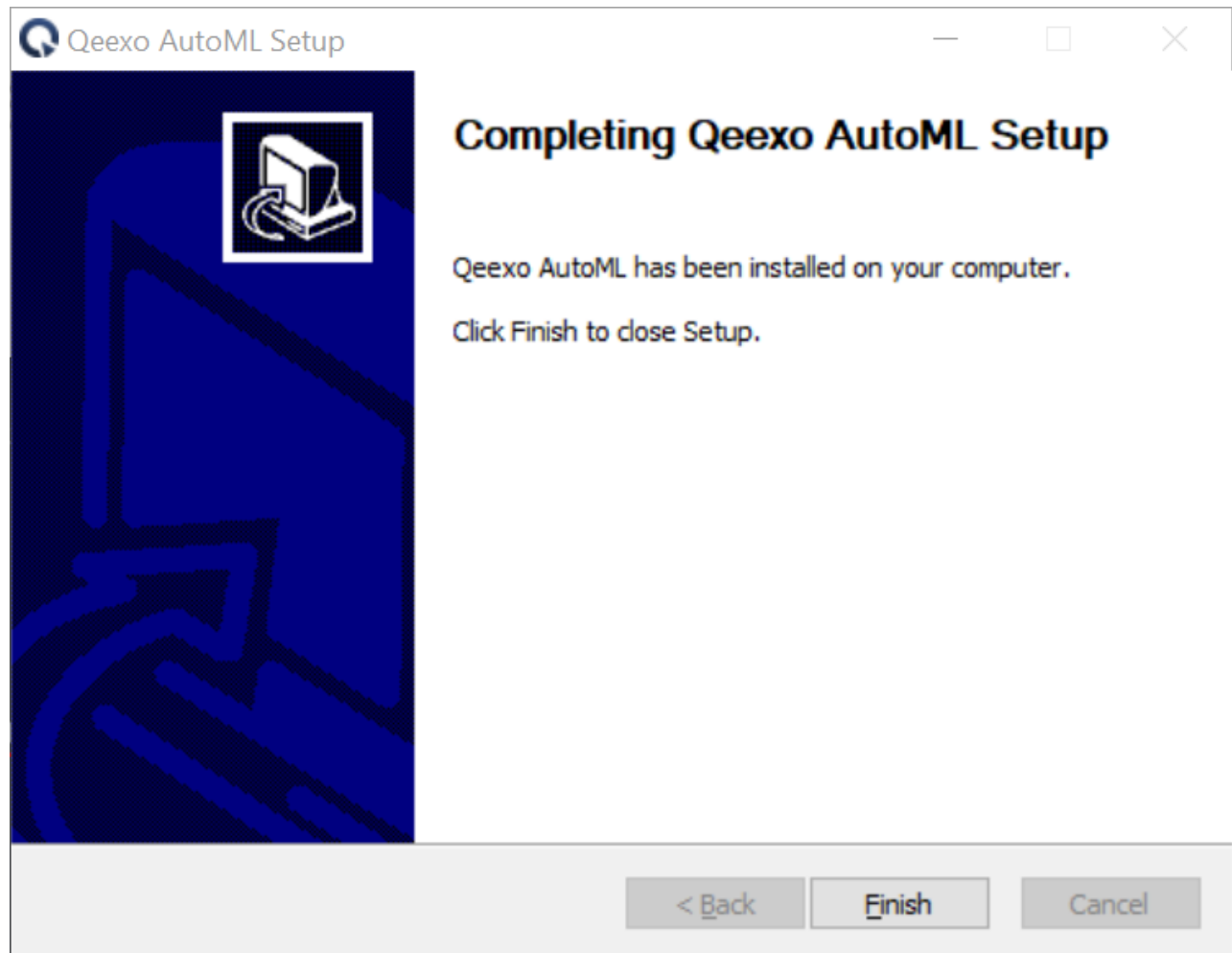


We recommend to leave the Destination Folder as default path. Click "Install" button to proceed.

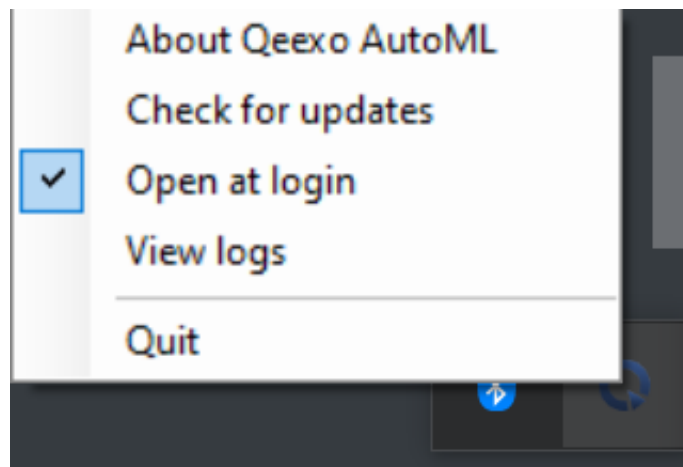


After installation, click "Finish" to close Setup.





You should see Qeexo AutoML application running on the menu bar.



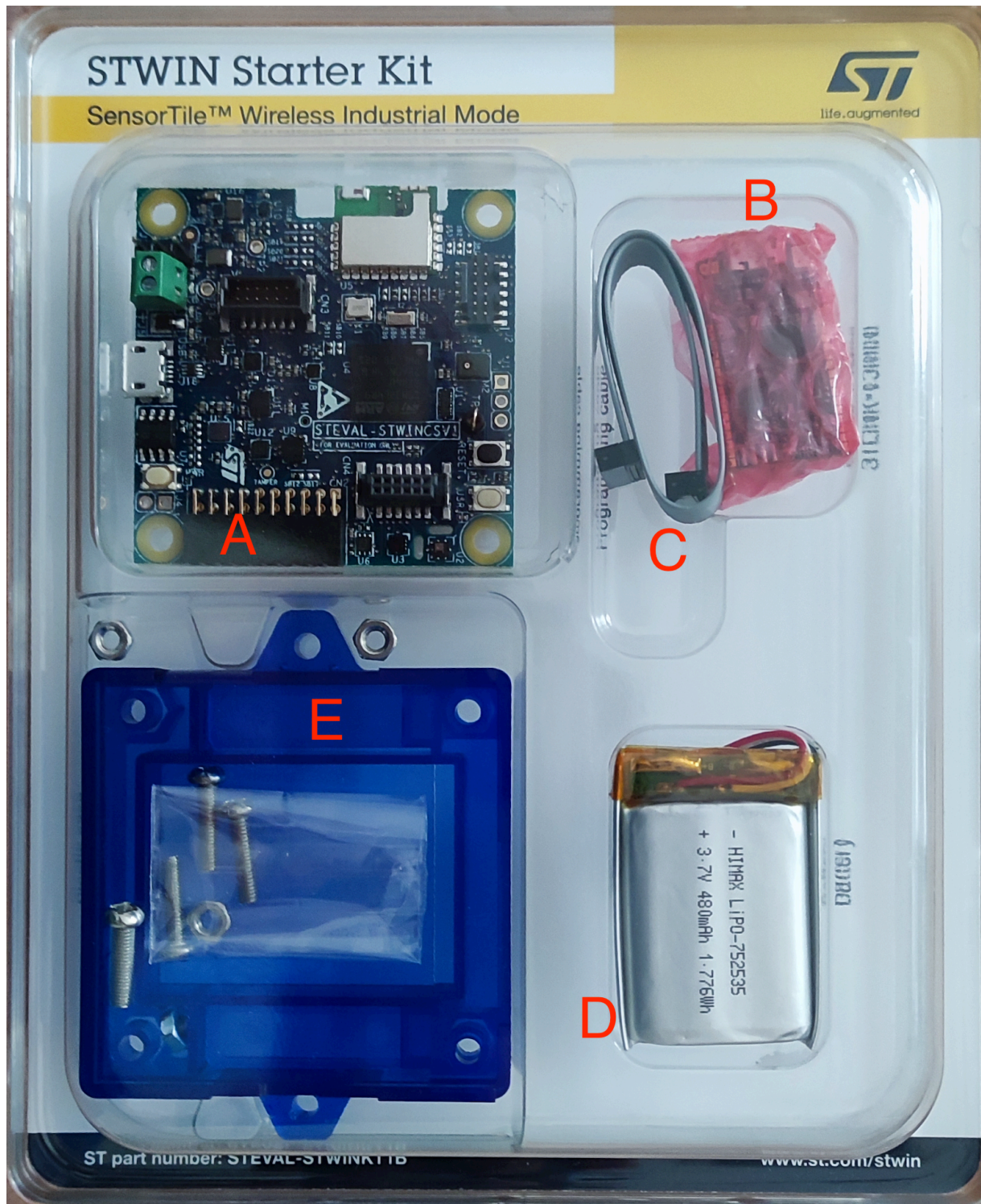
## STEP 2: Setup STWINKT1B

---

### A. Prepare Hardware

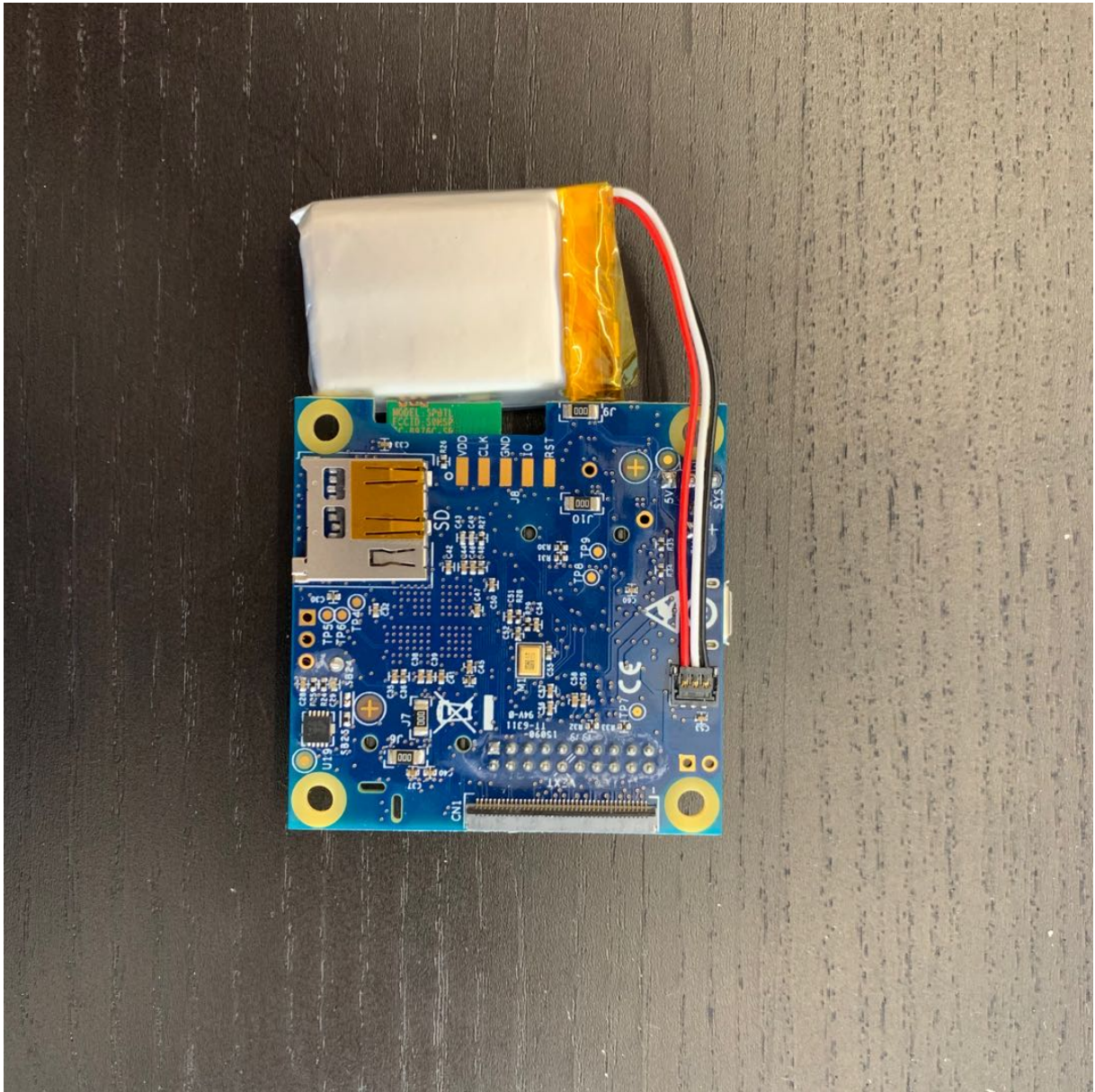
1. You should have received the STWIN Starter Kit with the following components:

- STWINKT1B (A)
- STLINK-V3MINI (B)
- Programming cable(14-pin) (C)
- Battery (D)
- Blue Plastic case and four pairs of screws and nuts (E)

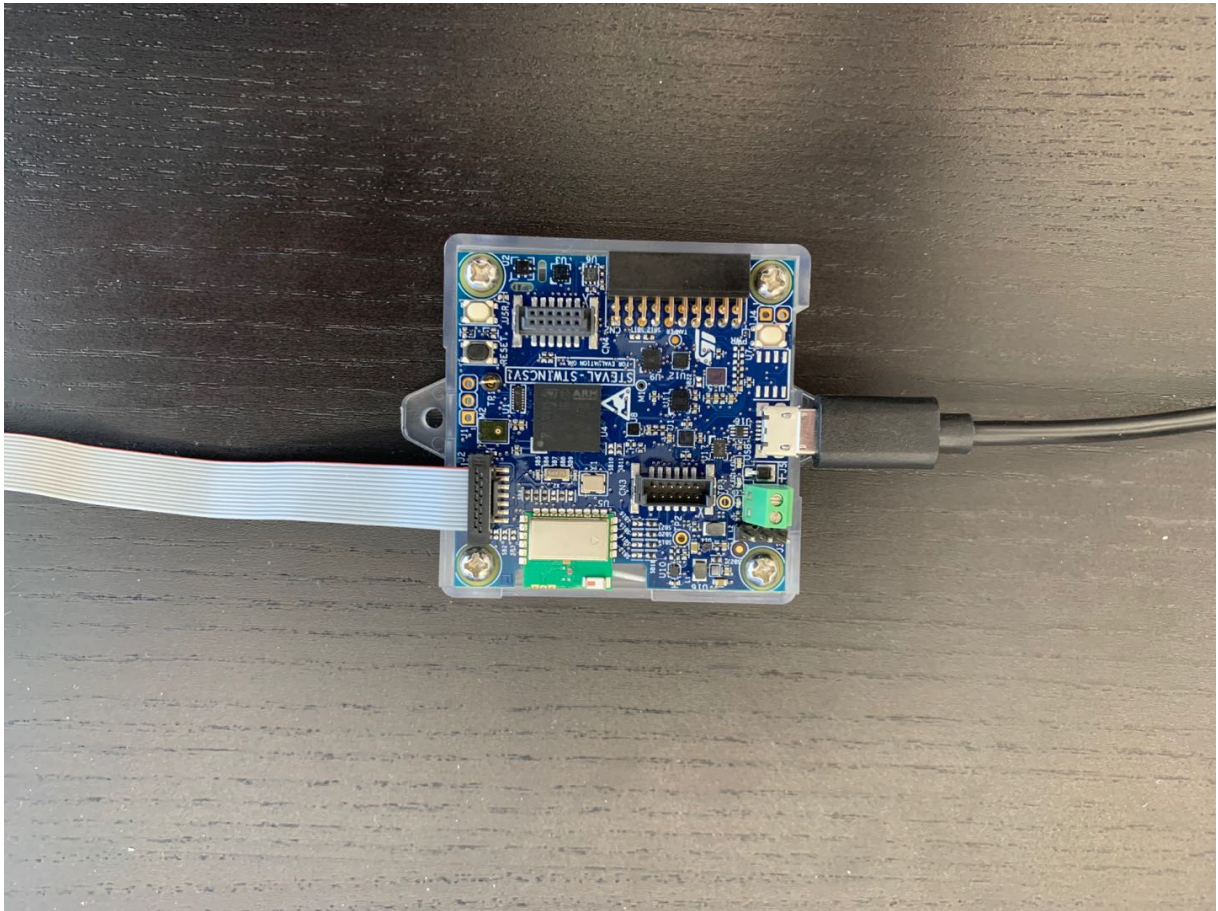


2. You will require an additional micro-USB cable to connect the STWINKT1B to your laptop.
3. Unbox the STWINKT1B. On the back of the board, plug in the battery cable. You should hear a small click as it snaps into place. (Connecting the battery is recommended but optional, as the STWINKT1B can be powered via USB while connected to your client machine.)





4. Screw the STWINKT1B board onto the blue plastic case.
5. The final setup should look similar to this:



## B. Install dfu-util

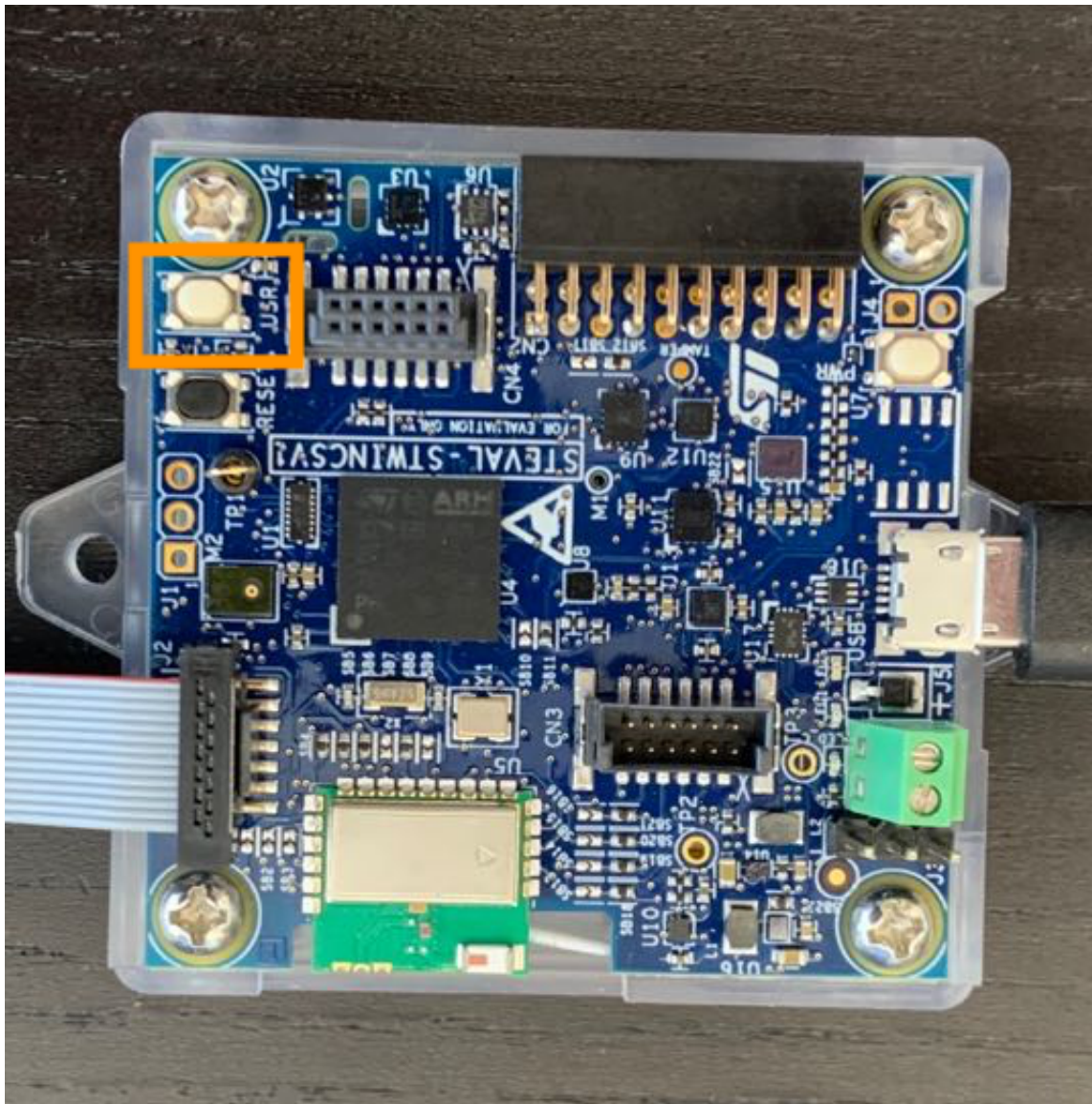
1. Navigate to [this tools folder](#) on sourceforge.net.
2. Download the latest binary archive. For instance, dfu-util-0.11-binaries.tar.xz
3. In order to extract the archive, please download [7-zip](#). Choose 32 bit or 64 bit depending on your Windows 10. Double click the 7-zip EXE file to install this utility on your computer.
4. In File Explorer, enter `%PROGRAMFILES%` in the address bar.
5. Right click, New → Folder. Name it **dfu-util**.
6. Use 7-zip to uncompress the dfu-util binary that end with `tar.xz`.
7. Extract the **dfu-util-static.exe** file from the archive. Make sure the destination folder is the newly created **dfu-util** folder.
8. Go back to File Explorer, and rename **dfu-util-static.exe** to **dfu-util.exe**. For Qeexo AutoML to work with this hardware, `dfu-util` must be named properly in the aforementioned folder.



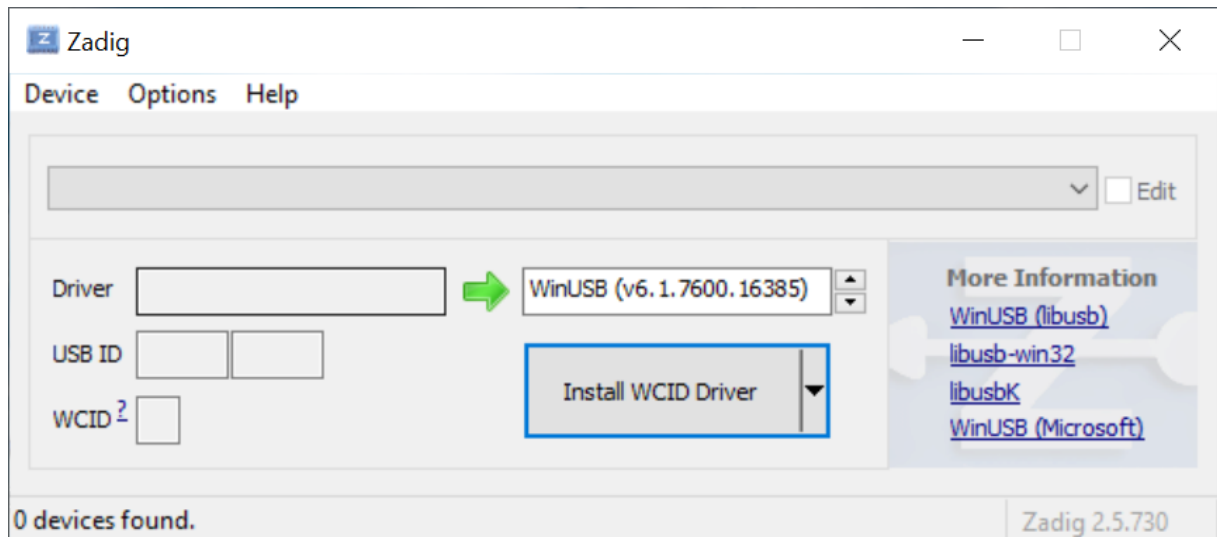
## C. Update USB Driver

1. Please visit this [link](#) to download **Zadig**.
2. Plug in STWIN board while holding down the **USR** button.

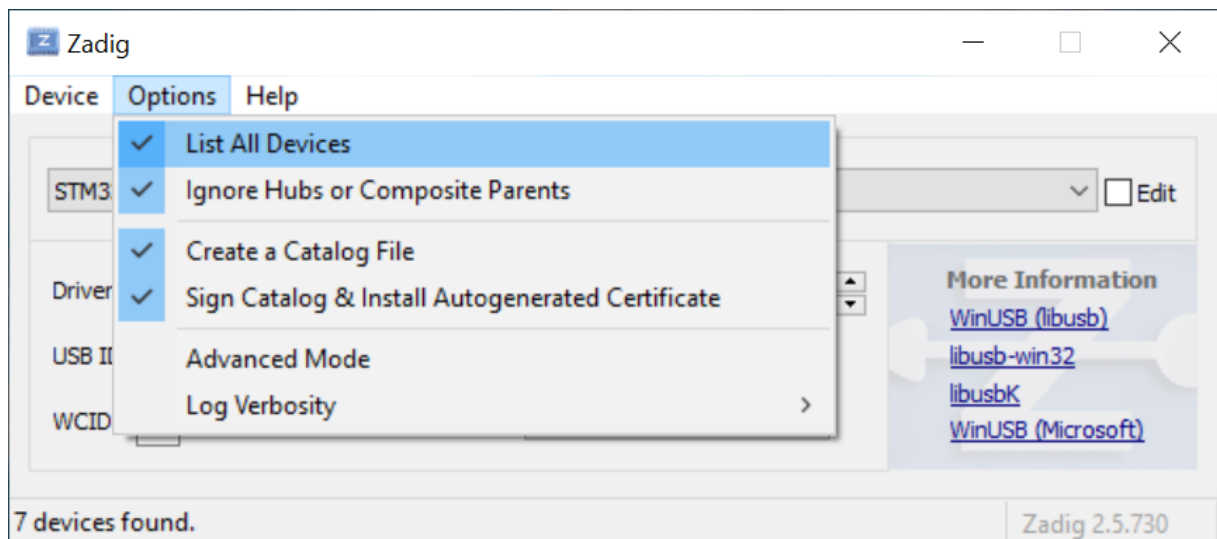
A red LED on STWINKT1B should blink when the device is connected to your laptop. This indicates the device is powered and in normal status.



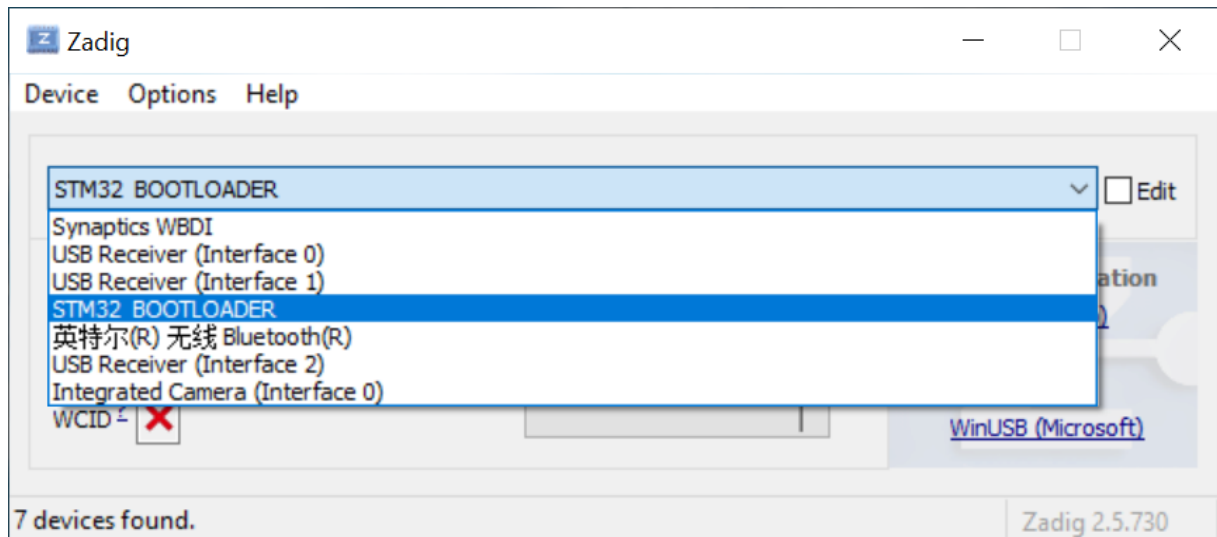
1. Let Windows finish searching for drivers.
2. Start Zadig



3. Select "Options" -> "List All Devices"

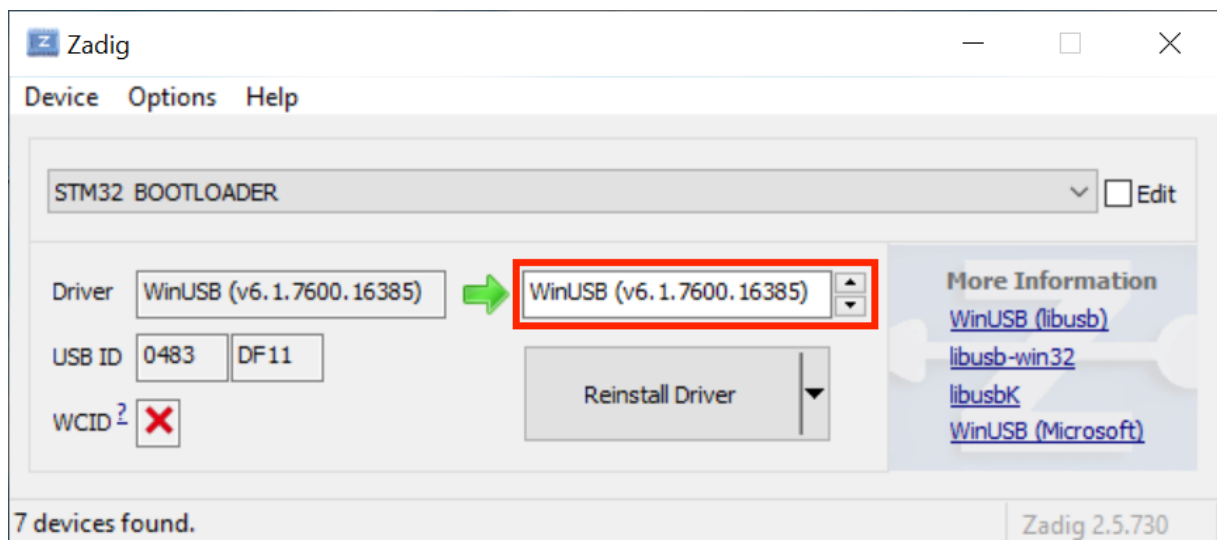


4. Select "STM32 BOOTLOADER" from the device dropdown



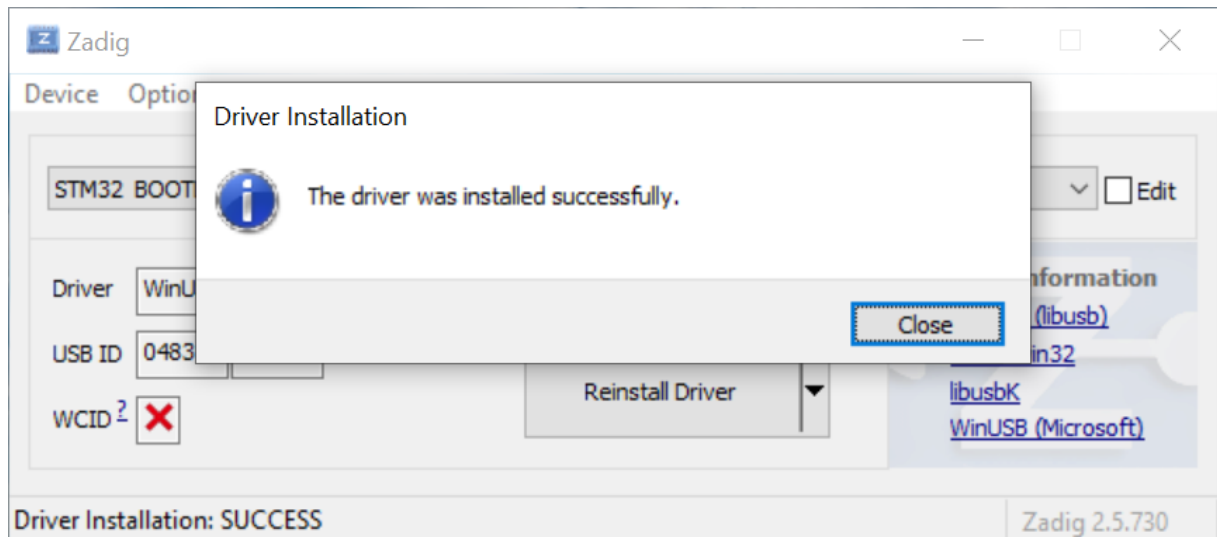
If "STM32 BOOTLOADER" is not available as a dropdown, ensure that the battery is disconnected from SensorTile.box and repeat step C.2. above (plugin USB cable while holding down "BOOT" button). If you need additional support, contact us by fillin in this [form](#).

5. Select "WinUSB (v6.1.7600.16385)" as new driver



6. Click "Replace Driver". After installation, You can see "The drive was installed successfully". Click "Close".





7. Please restart your laptop.

## D. Connect Hardware

**Note:** This process is only necessary for first time set up.

1. Connect one end of the micro-USB cable to laptop first. DO NOT CONNECT the cable to STWINK1B yet.
2. Locate and hold the USB button on the STWINK1B.
3. While holding the USB button, connect STWINK1B to the other end of the micro-USB cable.

A red LED on STWINKT1B should blink when the device is connected to your laptop indicating the device is powered and in normal status. Your device is now ready to flash in Qeexo AutoML.

## STEP 3: Run Qeexo AutoML

---

You should now have everything you need to run Qeexo AutoML.

Open your browser, navigate to [Qeexo AutoML](#), and log in with the account you registered in "Step 1B Download Qeexo AutoML".

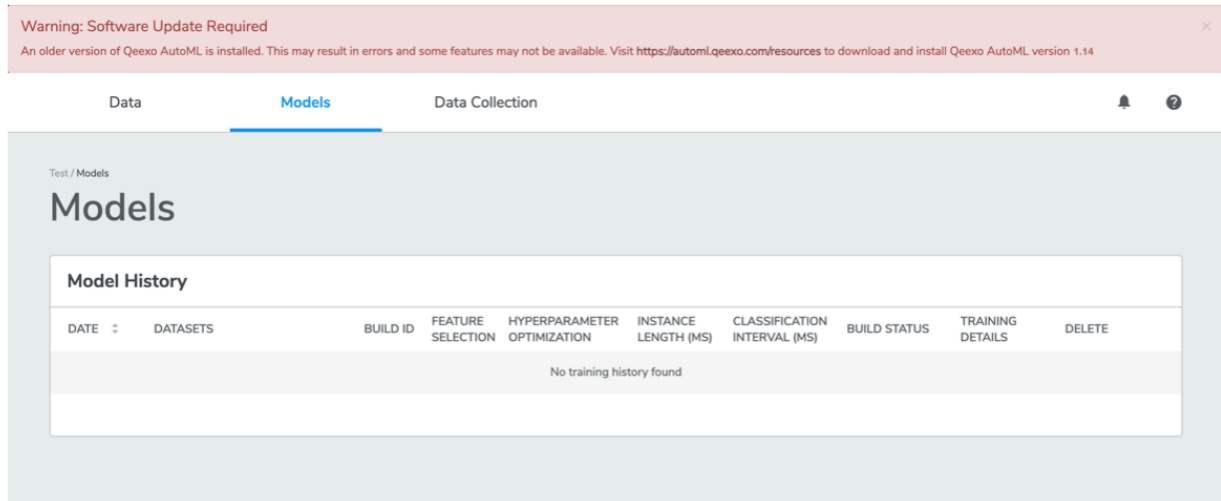
For help on using Qeexo AutoML, refer to the [QeexoAutoML User Guide](#).

## STEP 4: Update Qeexo AutoML

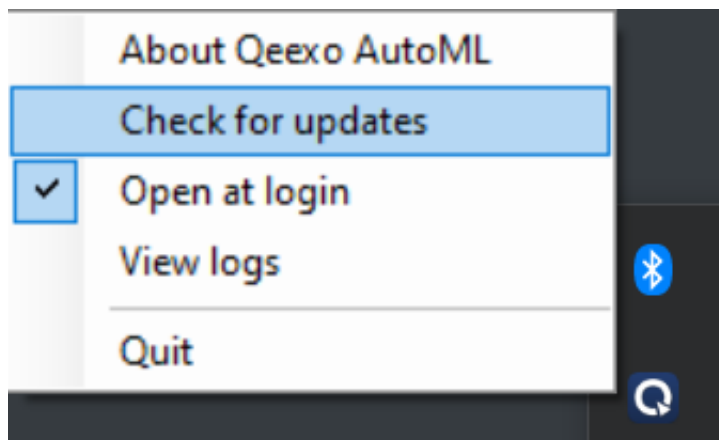
---

Qeexo may periodically release software updates to fix bugs, improve performance, or add features. There are a few ways to check for Qeexo AutoML updates:

1. **Automatically:** The application will detect if there is an older version installed and will send a warning when you log in to Qeexo AutoML. When notified of new release, please refer to "STEP 1: Install Qeexo AutoML" (and skip section A, "Prerequisites") in this guide above.



1. **Manually:** You can also check if there is a newer version available by clicking on **Check for updates** under the Qeexo AutoML icon in the menu bar.



Click **Install Update** if a newer version is detected

2. Email notification: Qeexo team may send email to users about new software update.